



STAMPED CARRIAGE HOUSE



THE
QUALITY
GARAGE
DOOR™

Stamped Carriage House
garage doors are used on all the
building projects for
Homes For Our Troops.



REKINDLE THE PAST

STAMPED CARRIAGE HOUSE

Rustic craftsmanship brings unparalleled warmth and individuality to our line of carriage house style garage doors. Built with handcrafted details and a deeply embossed wood grain finish, this series perfectly captures the appeal of traditional carriage house doors.

GARAGE DOOR STYLES



Stamped Short



Stamped Long



Stamped Short Panel, Model 5251 shown in sandstone with optional plain glass, stockton window inserts and wrought iron hardware.



Stamped Long Panel, Model 5916 shown in white with optional plain glass, stockton window inserts and spade hardware.

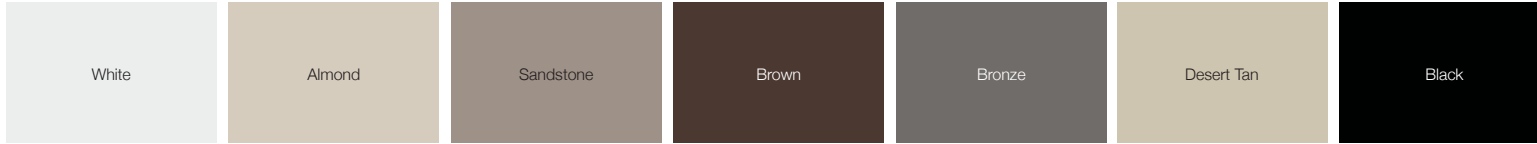


Learn more at
chiohd.com/stamped-carriage-house

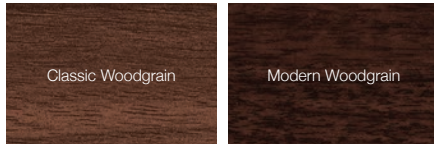
STAMPED CARRIAGE HOUSE **PERSONALIZING OPTIONS***

*Not all options shown are available with every model.

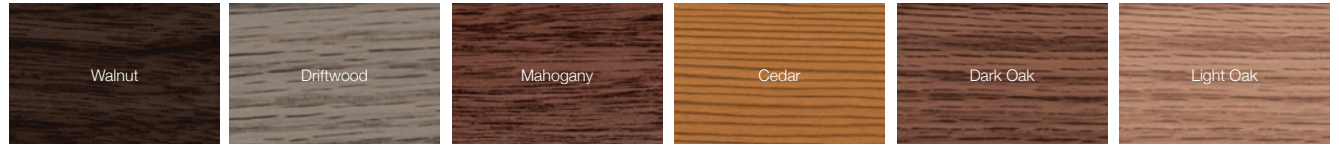
■ COLORS¹



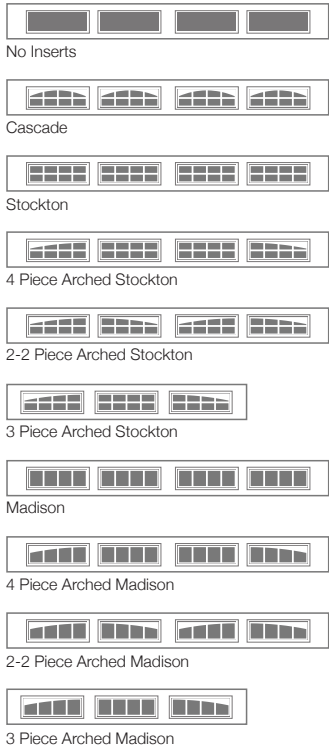
■ PAINTED WOODTONES¹



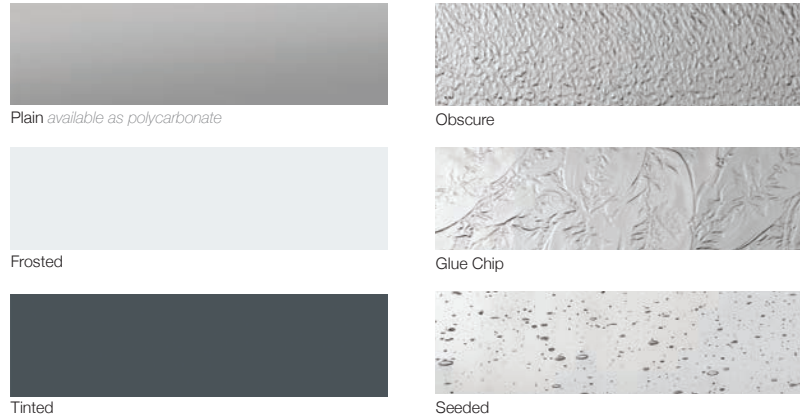
■ ACCENTS WOODTONES¹



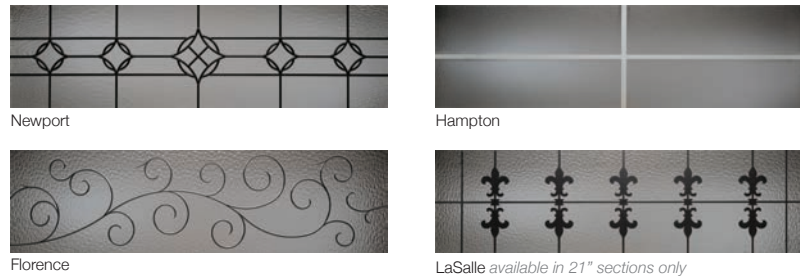
■ WINDOW INSERTS



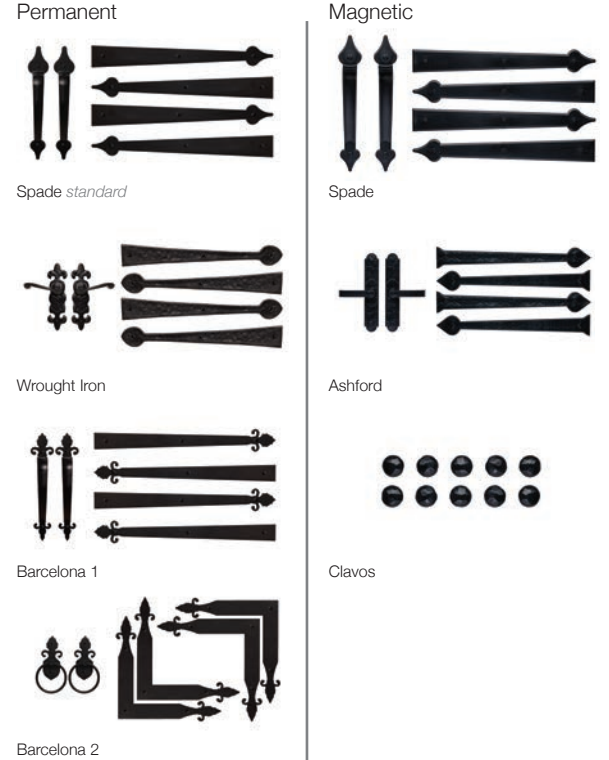
■ GLASS



■ DESIGNER GLASS



■ EXTERIOR HARDWARE



STAMPED CARRIAGE HOUSE MODEL SELECTION CHART

Select Your Garage Door Model

	GOOD	BETTER		BEST
Insulation Type	No Insulation 	1-3/8" Polystyrene 	1-13/16" Polystyrene 	1-7/8" Polyurethane 
R-value	R-0.0	R-7.94	R-9.65	R-16.55
Backing	—	Vinyl	Steel	Steel
Construction Type	Standard	Standard	Medium Duty	Heavy Duty
Panel Style / Model Number				
 Stamped Short	5250	5251	5283	5216
 Stamped Long	5950	5951	5983	5916

Personalize Your Garage Door

Colors¹ All Models are available in: White Almond Sandstone Brown Desert Tan

Bronze				•
Black				•
Painted Woodtones	•	•		
Accents Woodtones¹			•	•
Designer Glass			•	•

¹ Refer to your local C.H.I. Dealer for exact color and woodtones match.



Stamped Long Panel, Model 5916 shown in white with optional plain glass, 4 piece arched stockton window inserts and wrought iron hardware.



Limited Lifetime Warranty

Part of owning a C.H.I. garage door is knowing that you can rely on the industry's best warranty. To maintain proper operation, an annual service inspection by a C.H.I. dealer is encouraged.



SECTIONS
Limited Lifetime



SPRINGS
3 Years



HARDWARE¹
3 & 6 Years

¹3 years for standard or 6 years for medium and heavy duty hardware.



THE WARRANTY YOU CAN TRUST

C.H.I. Overhead Doors manufactures products that are exceptional in quality and craftsmanship, and built to stand the test of time. Our Limited Lifetime Warranty covers all the essential elements of your door, offering peace of mind and keeping your door in motion.

Learn more at chiohd.com/warranty

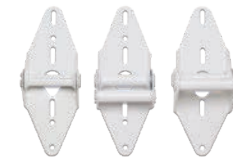
Consult with your C.H.I. Dealer for specific warranty coverage as each model varies in coverage.



LIFETIME PACKAGE

Extend your lifetime warranty to the entire door with the Lifetime Package. This option provides upgraded hardware and springs and lifetime coverage for as long as you own your home.

The Lifetime Package is only available on Models 5216/5916 and 5283/5983.



APPEARANCE PACKAGE

All hardware, including struts and track, is powder coated, creating a complete garage door system with a lasting impression.



C.H.I. COLOR MATCHING

Our in-house powder coating provides 100's of color options while providing a maintenance free, durable finish.

Powder Coating is not available on all models, refer to your local C.H.I. Dealer for more information.



WIND LOAD

These garage doors are designed, tested, and built to the most rugged specifications. Available sizes and options will vary between models. Ask your local C.H.I. Dealer about our full line of windload rated doors.

Learn more at chiohd.com/wind-load



Stamped Short Panel, Model 5283 shown in almond with optional plain glass, arched stockton window inserts and wrought iron hardware.

C.H.I. DEALERS

A BETTER BUYING EXPERIENCE

We sell all of our doors exclusively through independent, professional door installers – never a big box store.

We partner with the best in the business to uphold the highest standards of quality and integrity. Personalized service, expert product knowledge, and experienced installation professionals are just a few reasons why C.H.I. Overhead Doors trusts only garage door professionals to sell and install our products.

Your Local Garage Door Professional



chiohd.com

1485 Sunrise Drive | Arthur, IL 61911 | USA

© 2018 C.H.I. Overhead Doors

All information presented is based on the specifications and features available at the time of printing and is subject to change without notice.